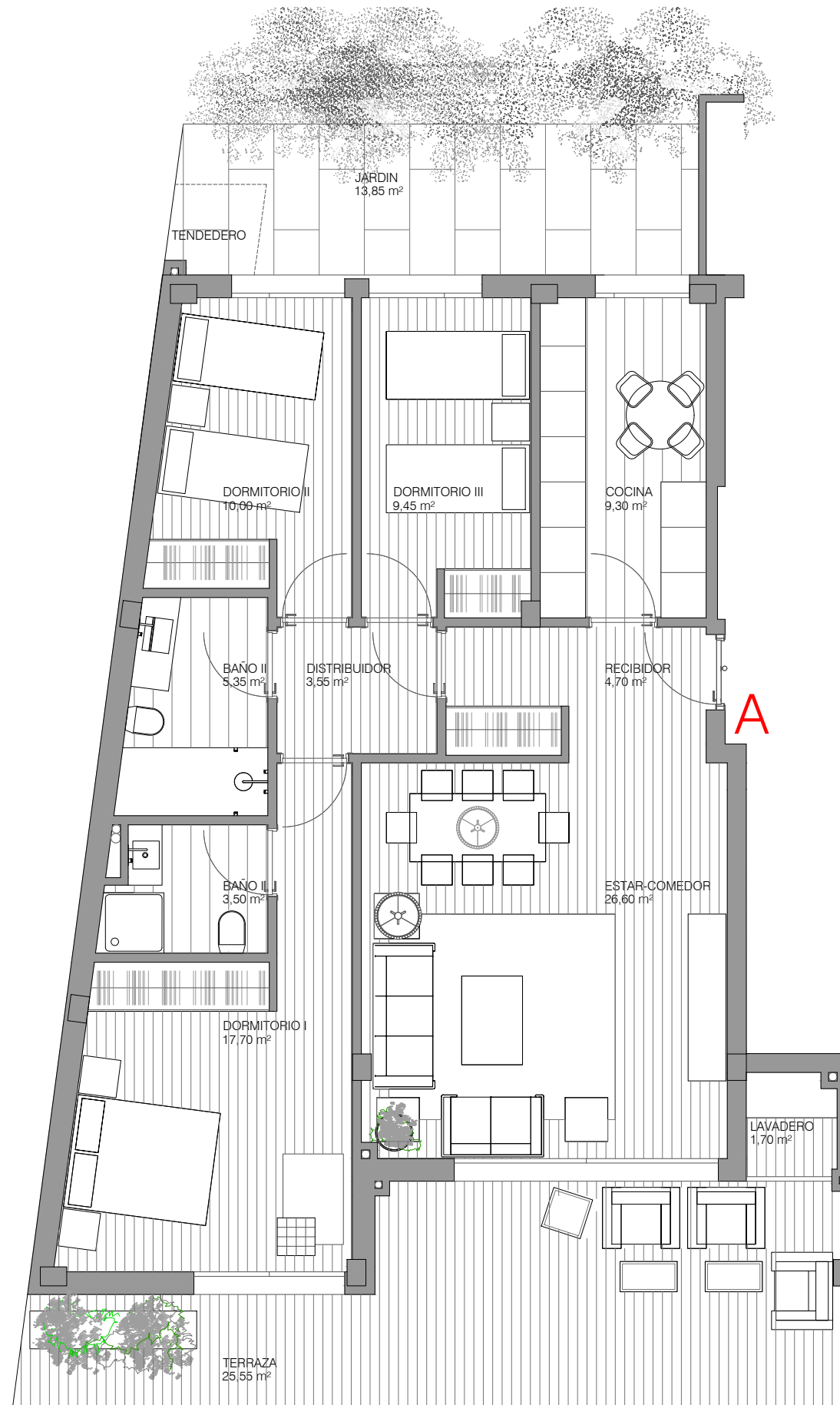


# RESIDENCIAL CIES

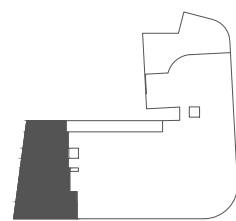
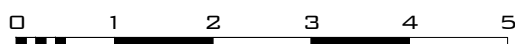
C/ PLAYA DE CANIDO 197, VIGO

## TIPOLOGIA DE VIVIENDA **0.A**

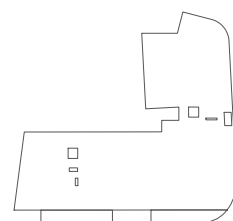


SUPERFICIES INTERIORES	
RECIBIDOR	4,70 M <sup>2</sup>
ESTAR - COMEDOR	26,60 M <sup>2</sup>
COCINA	9,30 M <sup>2</sup>
DISTRIBUIDOR	3,55 M <sup>2</sup>
BAÑO I	3,50 M <sup>2</sup>
BAÑO II	5,35 M <sup>2</sup>
LAVADERO	1,70 M <sup>2</sup>
DORMITORIO I	17,70 M <sup>2</sup>
DORMITORIO II	9,45 M <sup>2</sup>
DORMITORIO III	10,00 M <sup>2</sup>
ÚTIL INTERIOR	91,85 M <sup>2</sup>
CONSTRUIDA CERRADA	101,50 M <sup>2</sup>
TERRAZA	25,55 M <sup>2</sup>
CONSTRUIDA TOTAL	127,05 M <sup>2</sup>
JARDIN	13,85 M <sup>2</sup>

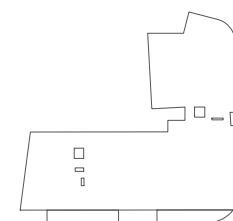
ESCALA GRÁFICA



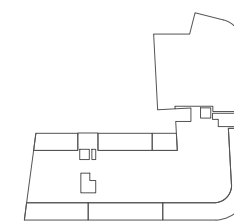
PLANTA BAJA



PLANTA PRIMERA



PLANTA SEGUNDA



PLANTA ATICO